

AXA INVESTPLUS EQUITY CORE

a sub-fund of AXA INVESTPLUS

Class A Distribution EUR (LU0472946069)

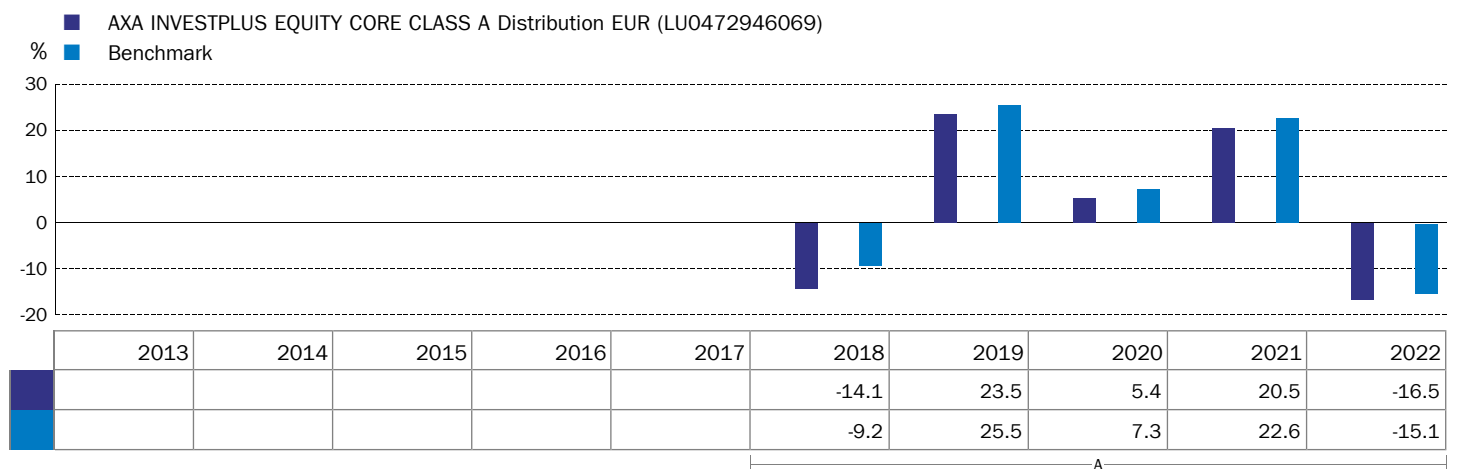
AXA INVESTPLUS EQUITY CORE is authorised in Luxembourg and regulated by the Commission de Surveillance du Secteur Financier CSSF.

This product is managed by AXA Investment Managers Paris, part of the AXA IM Group, which is authorised in France and supervised by the Autorité des Marchés Financiers (AMF). For more information on this product, please refer to <https://www.axa-im.lu> or call +32 (0) 2 679 63 50

Accurate as of: **1 June 2023**

Past performance

Past performance is not a reliable indicator of future performance. Markets could develop very differently in the future.



A Performance prior to 1 June 2023 was achieved while the Fund was constituted under the Alternative Investment Fund Managers Directive (AIFMD). Since its conversion on that date, the Fund has existed as a UCITS scheme.

- Performance data has been calculated including tax, ongoing charges and portfolio transaction costs and excluding entry and exit charges, in EUR.
- Where no past performance is shown there was insufficient data available in that year to provide performance.
- The Fund started to issue units in December 2009.